



RIDER DIRECTOS

V8 10/2/2024



DATOS

Dirección

C/ Bernardino Obregón nº18,
28012 Madrid

Email

antonio@salavillanos.es



.....

SONIDO

PA

2x L-Acoustics Arcs Wifo Wide
4x L-Acoustics Arcs Wifo Focus
4x L-Acoustics SB 218
2x L-Acoustics L-A8

FRONT FILL

2x 8 xt

Refuerzo PA discoteca

4x L-Acoustics 112X

MONITORES

6x L-Acoustics 112 XT
1x Genelec 8040
4x Behringer Powerplay P2
1x Superlux HA3D

FOH

1x Yamaha CL5
RIO 32 + RIO 16 (48 inputs / 24 outputs)

MICROFONÍA

5x Shure SM57.
7x Shure SM58.
1x Shure Beta 52A
1x Shure Beta 91A
2x Shure KSM 44A
2x Sennheiser md421
2x Sennheiser md 441
2x Neumann Km 184
3x Sennheiser e604
2x AKG 451
1x AKG 411

DI´s

3x BSS AR133
4x Palmer PAN 04

VARIOS

12x pies de micro altos
7x pies de micro cortos
45x cables XLR

2x Cat 6 (Escenario a FOH)

.....

BACKLINE

Piano: Yamaha C7

Tuned to 440hz / serial number: 6234915

(In case a change in pitch is needed, consult with Sala Villanos)

Drum Kit: Yamaha Recording

1x Bass Drum 20" (front hole)

1x Tom 10"

1x Tom 12"

1x Floor Tom 14"

1x Snare Drum 14"

1x Hi Hat stand Yamahs Serie CS

5x Cymbal Stands Yamaha Serie CS

1x bass drum pedal Yamaha FP9500C

Drum heads Remo Ambassador

Bass Amp

1x Markbass MB58R

1x Markbass Little Mark IV

Guitar Amp

1x Fender 65 Twin Reverb

1x Line6 Catalyist 60

5x Music stands

DJ

1x Mixer Pioneer DJM-A9

2x Pioneer CDJ 3000

2x Technics SL-1

.....

ILUMINACIÓN

ESCENARIO

6x Robe Pointe10R
6x Claypaky sharpy
6x Cameo Thunder Wash 600 RGB
12x Stairville LED MatrixBlinder 5x5 RGB WW
7x Martin Mac Wash AURA
1x StairvilleDJ Laser RGB Pro Advanced1000
1x Factor Fogger FS-Hazer-02

PISTA

2x Cameo Thunder Wash 600 RGB
4x Showtec Spot Pro575
4x Showtec Explorer 575 Wash MSR-575

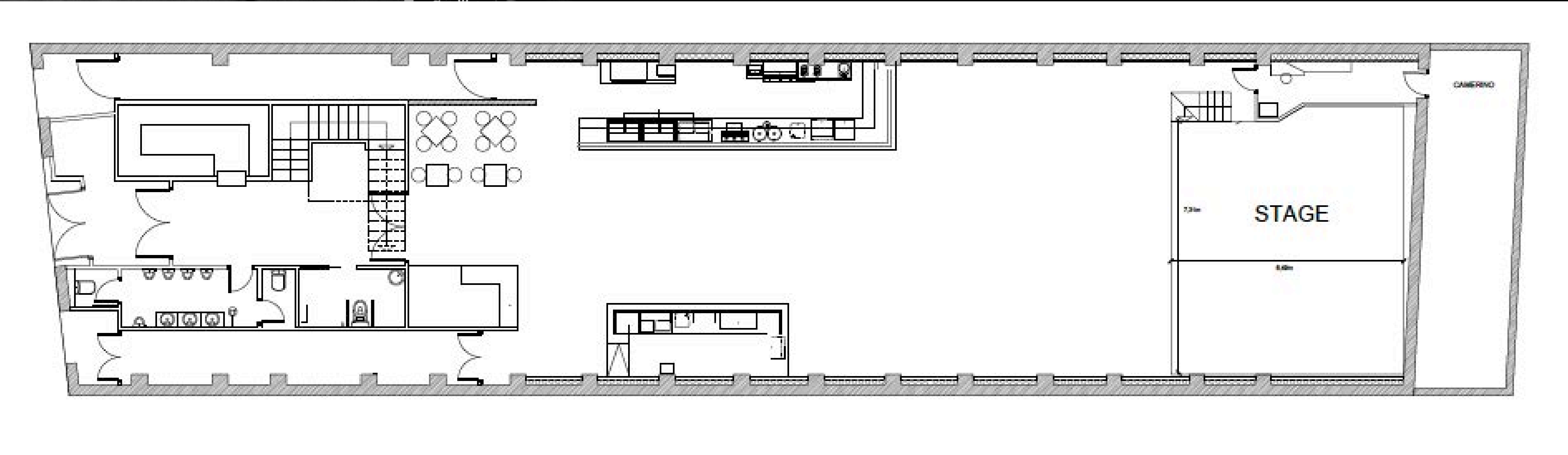
MESA DE ILUMINACIÓN

1x Avolites Quartz (11.1)



ESCENARIO

7,31 metros de boca (wide)
6,49 metros de fondo (deep)





2024