



LIVE RIDER

2026 v1.1



INFO

Address

C/ Bernardino Obregón, 18 - 28012 Madrid

Tech contacts

Sound: sonido@salavillanos.es

Lights: luces@salavillanos.es



SOUND

PA SYSTEM

2x L-Acoustics ARCS WIFO Wide
4x L-Acoustics ARCS WIFO Focus
2x L-Acoustics SB 218
2x L-Acoustics L-A8

FRONT FILL

2x L-Acoustics 8XT

PA REINFORCEMENT (clubbing)

5x L-Acoustics 112XTi

SIDE FILL

2x L-Acoustics 115XT

MONITORS

7x L-Acoustics 112 XT
1x Genelec 8040
1x Shure PSM300 in-ear
4x Behringer Powerplay P2
1x Superlux HA3D

FOH

1x Yamaha CL5
RIO 32 + RIO 16
(48 inputs / 24 outputs)

MICROPHONES

7x Shure SM57
9x Shure SM58
1x Shure QLXD2/SM58 G51
1x Shure Beta 52A
1x Shure Beta 91A
2x Shure KSM 44A
1x Sennheiser MD 441
2x Neumann KM 184
3x Sennheiser e604
2x AKG 451
1x AKG 411

DI BOXES

4x BSS AR133
4x Palmer PAN 04

MISC

13x boom mic stands
8x small mic stands
1x round base mic stand
45x XLR cables
4x risers 2x1m. w/ adjustable height
3x dance floor 2x1m.
2x cat.6 F/UTP (from stage to FOH)

*RESTRICTIONS

Maximum sound level limit of 100 dBA
LAeq-5s and 114 dBC LAeq-5s



BACKLINE

PIANO

Yamaha C7
Serie number 6234915
Tuned to 440hz (check if it is possible to change the tuning)

The piano always remains on stage

DRUM KIT

Yamaha Recording Custom
1x bass drum 20" (front hole)
1x tom 10" x 07"
1x tom 12" x 08"
1x floor tom 14" x 13"
1x Stage Custom snare 14" x 5,5"
1x Yamaha Serie CS hi hat
5x Yamaha Serie CS cymbal stands
1x snare stand
1x Yamaha FP9500C bass drum pedal
Remo Ambassador drum heads
Zildjian K cymbals set
14" hi-hat
16" Dark Thin crash
18" K Dark Thin crash
20" K ride

BASS

1x Markbass MB58R 4x10" amp
1x Markbass Little Mark IV head

GUITAR

1x Fender 65 Twin Reverb amp
1x Line6 Catalyist 60 amp

PERCUSSION

Meinl Woodcraft Series WCO congas set (incl. stands)
11.3/4" conga
11" quinto
12.1/2" tumba
LP 793X Galaxy Giovanni bongo set (incl. stand)
LP ES-5 cowbell

MISC

3x Hercules guitar stands
5x music stands
TAD Transformer 230/115V 500VA

DJ SET

1x Pioneer DJM-A9 mixer
2x Pioneer CDJ 3000
2x Technics SL-1200 mk7



LIGHTS

LIGHT DESK

1x GrandMA2 on PC
Command + Fader Wing

VIDEO

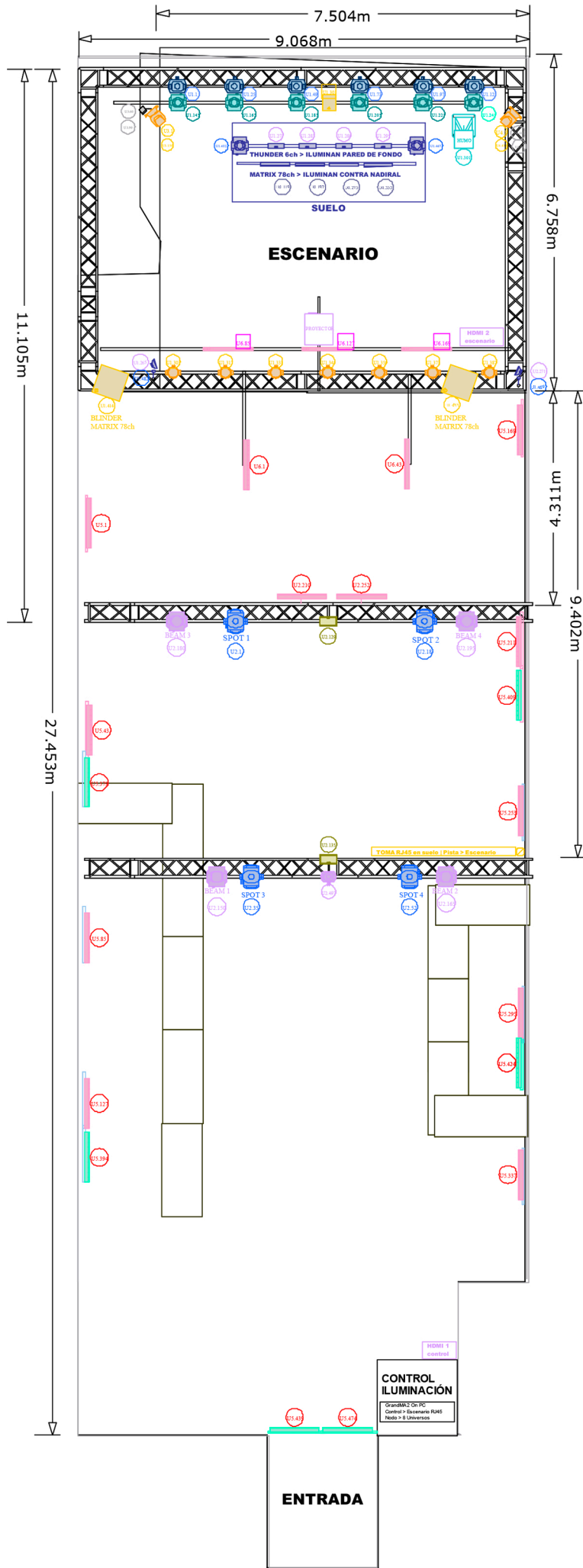
Panasonic PT-EX600E 6200lm / 720p projector
White projection screen (4.00 x 2.50 m.)

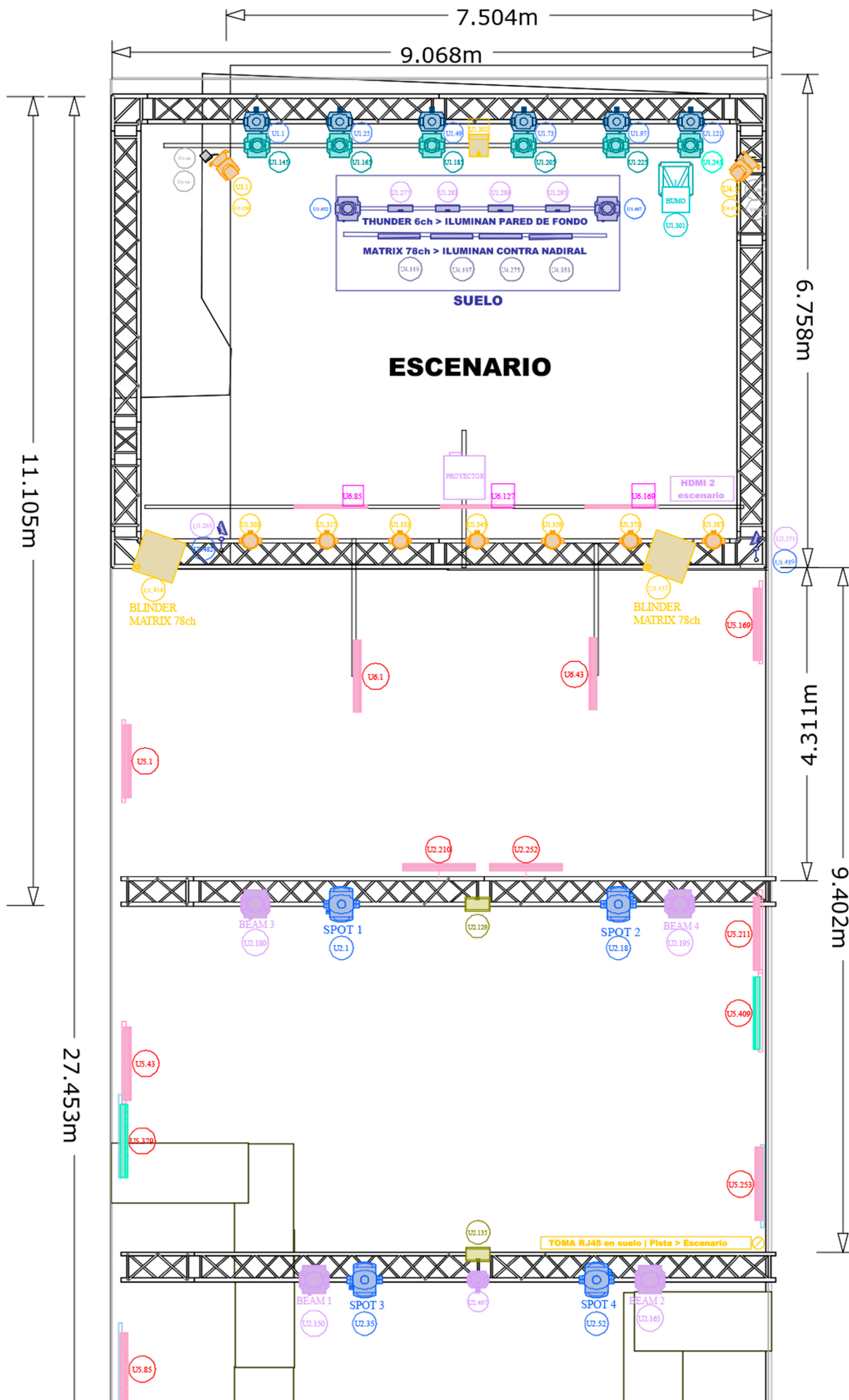
LIGHTING FIXTURE

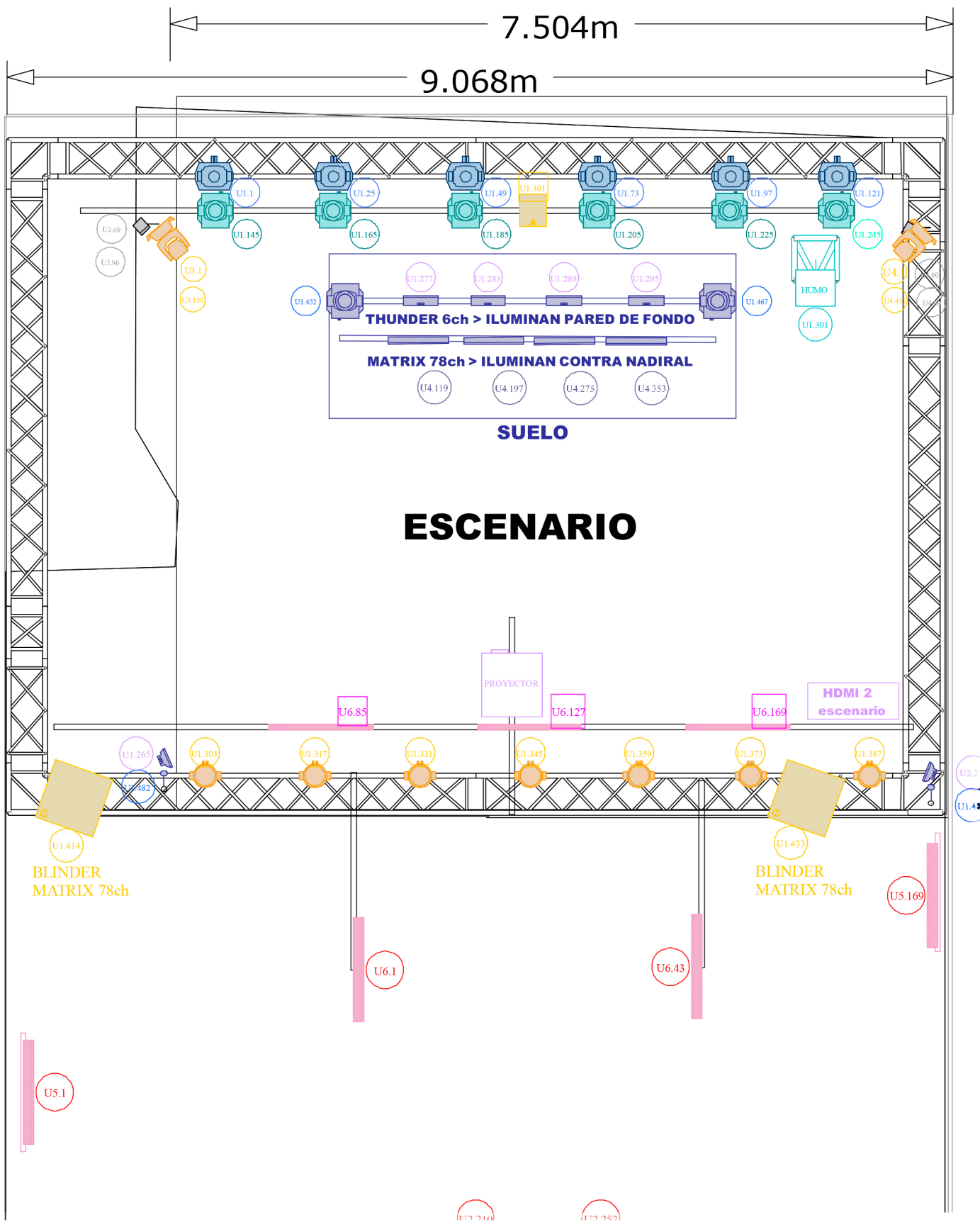
(See plot in the next page)

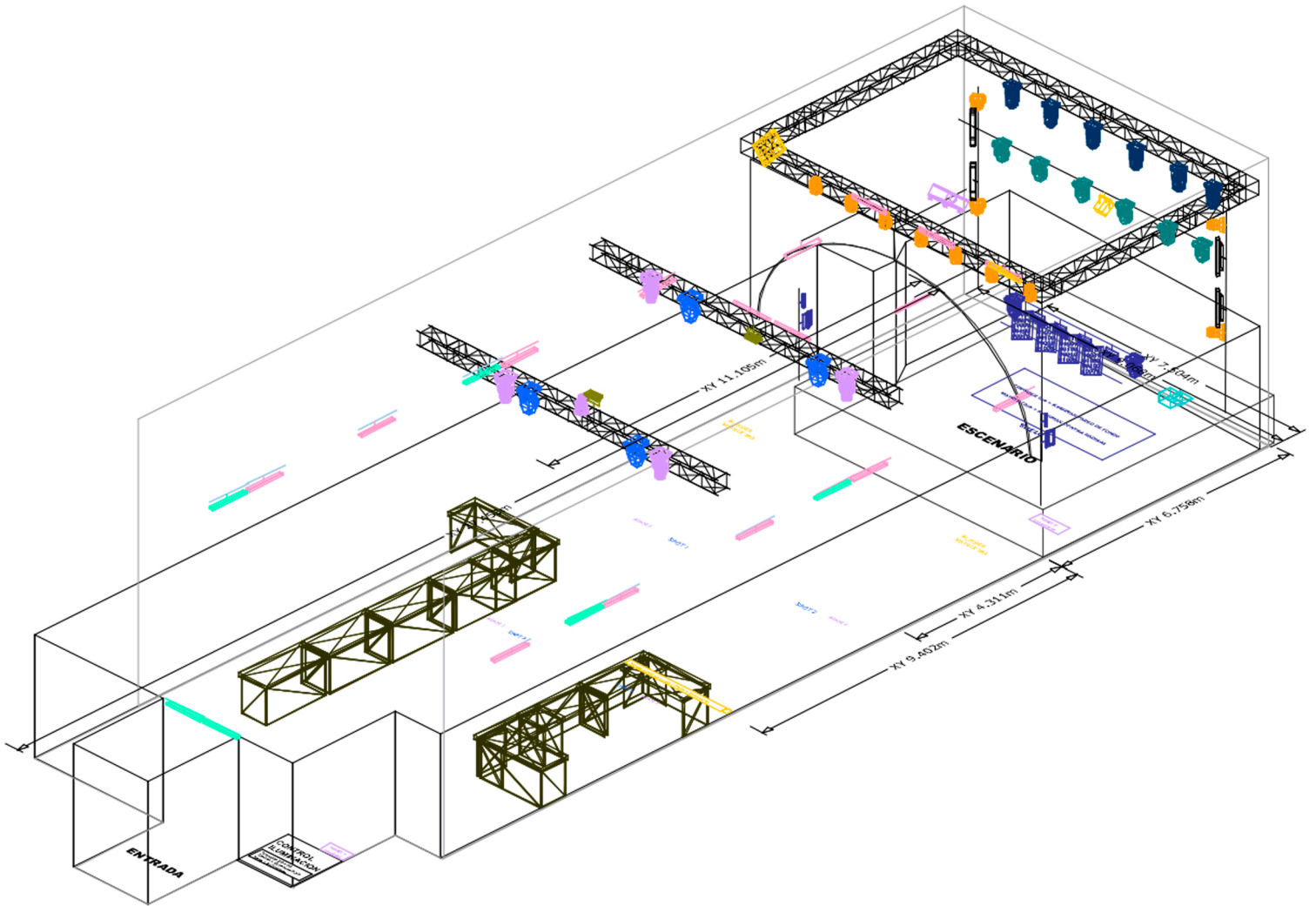
Legend

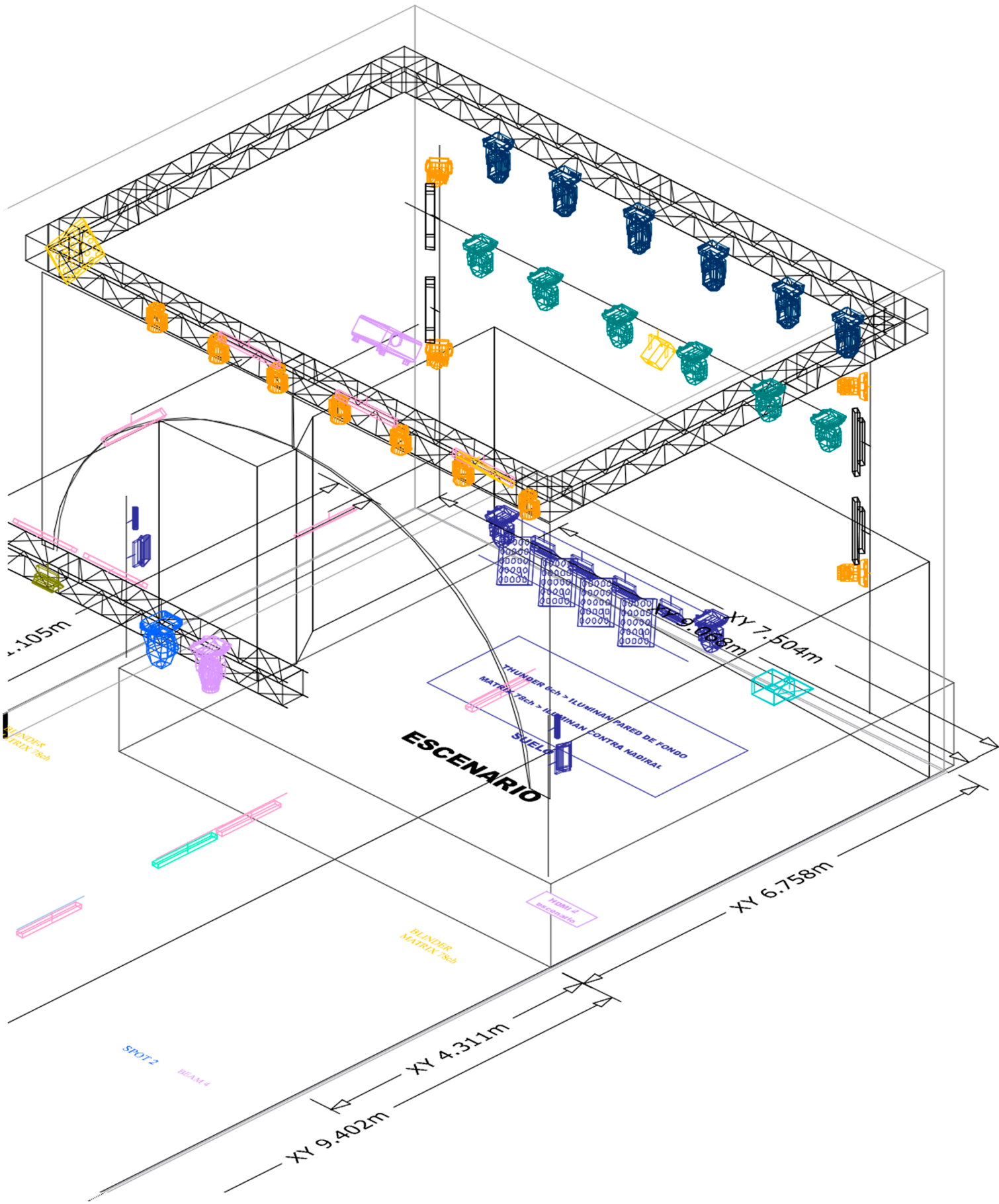
Symbol	Name	Count
 	FRONTAL > Wash "Aura" 14ch	7
 	CONTRA > Robin Pointe 24ch	6
 	CONTRA > Sharpy 19ch	6
 	CONTRA LATERAL > Wash K7 40w - 43ch	4
 	CONTRA LATERAL > 8 Pixel Bar RGB 24ch	4
 	4 CICLORAMA + 2 CANDILEJA + 2 LUZ SALA > Thunder Wash 600 RGB 6ch	8
 	4 CONTRA SUELO Cameo MATRIX 78ch // 2 CEGADORAS Cameo MATRIX 19ch	6
	ESCENARIO BOCA > Calles RGBW 7ch	2
 	PISTA > SPOT YR BSW250 17ch	4
 	PISTA > Beam led 200W	4
 	Bee 15ch - 2 SUELO escenario / 1 PISTA	3
 	PISTA > 15 Laser Avtech 42CH (Clubbing, no conciertos)	15
 	ESCENARIO > Láser Cameo (Clubbing, no conciertos)	1
 	Máquina de humo ANTARI 2ch - 1 Blower / 2 Haze	1













STAGE

7.31 meters width

6.49 meters depth

The piano always remains on stage

FOH and light control is located at the end of the venue (see picture attached)

The venue has only one dressing room behind the stage, equipped with a refrigerator, sofas and a bathroom.

